

Tufts Health Care Institute
136 Harrison Avenue
Boston, MA 02111

Imaging and Treatment Strategies in Primary Care Medicine

FRIDAY, APRIL 6, 2007
MASSACHUSETTS MEDICAL SOCIETY
CONFERENCE CENTER
AT WALTHAM WOODS
860 WINTER STREET
WALTHAM, MA

ACCREDITATION

This activity has been planned and implemented in accordance with the Essential Areas and policies of the Accreditation Council for Continuing Medical Education (ACCME) through the joint sponsorship of Tufts University School of Medicine (TUSM), Caritas Christi St. Elizabeth's Medical Center (CCSEMC) and Tufts Health Care Institute (THCI). TUSM is accredited by the ACCME to provide continuing medical education for physicians.

PHYSICIAN-CATEGORY 1 CREDIT

TUSM designates this educational activity for a maximum of **8.5 AMA PRA Category 1 Credit(s)**[™]. Physicians should only claim credit commensurate with the extent of their participation in the activity.

Of the 8.5 category 1 credits, **1.25** hours of instruction are designated for risk management credit.

CONFLICT OF INTEREST

Faculty members are required to report any existing, significant financial interest in, or other relationship(s) with the manufacturer(s) of commercial product(s) or commercial services discussed in this educational activity, including the commercial supporters of this program. This information will be made available at the program.

ADA/OEO

TUSM and THCI fully comply with the legal requirements of the Americans With Disabilities Act rules and regulations. If any participant attending this symposium is in need of special accommodations, please contact Tufts Health Care Institute at least 2 weeks prior to the program at 617-636-1000.

Tufts University School of Medicine (TUSM) considers all applicants and program participants without regard to race, color, national origin, age, religious creed, sex or sexual orientation. TUSM is an Equal Opportunity Employer.

This conference is supported in part by unrestricted educational grants from:

PROGRAM SUPPORTERS

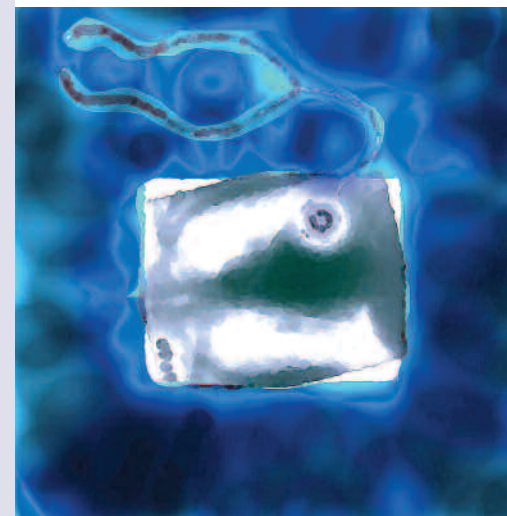
Astellas Pharma US, Inc.
Blue Cross Blue Shield of Massachusetts
Harvard Pilgrim Health Care
Tufts Health Plan

CANCELLATION/REFUND POLICY

Cancellation of conference registration must be requested in writing and postmarked or emailed (thci@thci.org) no later than March 30, 2007. Refunds, less a \$50 administrative fee per registrant, will be issued.

Cancellation/ refund requests will not be granted after March 30, 2007. Registrants who do not cancel by March 30, 2007 and do not attend are responsible for the full registration fee.

There is no penalty for substituting one attendee for another at any time. Registration substitutions will be accepted with written notification from the original registrant (via mail or email at thci@thci.org) In the unlikely event that Caritas Christi Health Care, Caritas St. Elizabeth's Department of Radiology or Department of Medicine, and/or THCI cancel the conference, registration fees will be refunded.



Imaging and Treatment Strategies in Primary Care Medicine

FRIDAY, APRIL 6, 2007
MASSACHUSETTS MEDICAL SOCIETY
CONFERENCE CENTER
AT WALTHAM WOODS
860 WINTER STREET
WALTHAM, MA

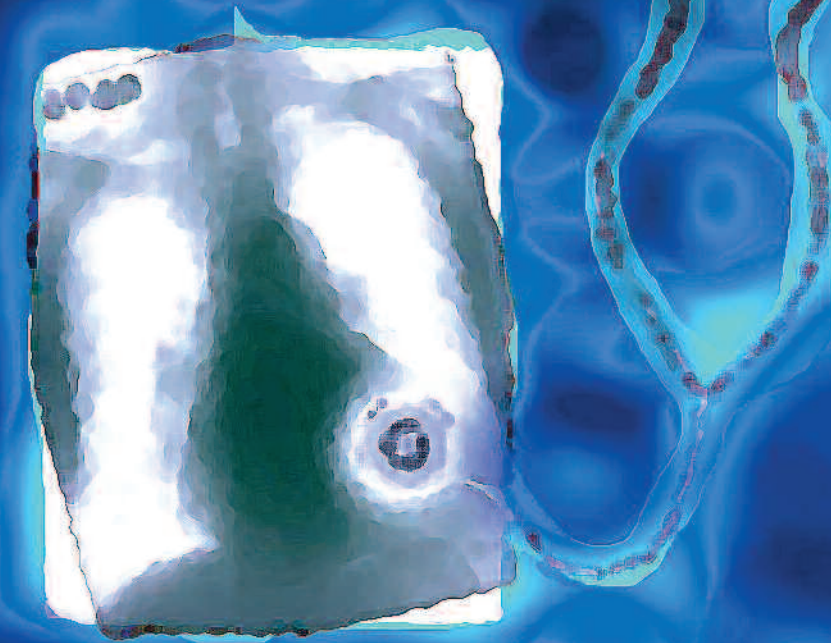
Caritas St. Elizabeth's Medical Center

Affiliated with Tufts University School of Medicine

Tufts
UNIVERSITY
School of Medicine

Tufts
Health
Care
Institute

Earn Risk Management CME!



Imaging and Treatment Strategies in Primary Care Medicine

Friday, April 6, 2007

7:30 a.m. – 5:00 p.m.

Massachusetts Medical Society Headquarters
Conference Center at Waltham Woods
860 Winter Street
Waltham, MA

This program is jointly sponsored by:

Tufts University School of Medicine
The Department of Radiology and
The Department of Medicine at
Caritas St. Elizabeth's Medical Center
Tufts Health Care Institute

PROGRAM GOAL:

Learn effective and efficient imaging and treatment strategies for common medical conditions in the rapidly changing environment of imaging technology.

EDUCATIONAL OBJECTIVES:

At the conclusion of this conference, participants will be able to:

- Apply evidence-based imaging and other diagnostic algorithms for common medical problems in an open forum moderated by a combined team of imaging specialists and experts in clinical medicine.
- Describe the cost considerations, technical advantages and limitations of new imaging modalities, such as PET scanning, multi-detector CT, and advanced MRI techniques in the evaluation of medical complaints.
- Identify therapeutic trends in common medical entities including the appropriate use of new pharmacologic agents.
- Identify cost trends in medical imaging and the opportunities to improve efficiency through evidence-based screening and early disease detection.

COURSE DIRECTORS

ASHLEY DAVIDOFF, MD

Director, Radiological Education
Co-Director, Abdominal Imaging, Department of Radiology
Caritas St. Elizabeth's Medical Center
Professor of Clinical Radiology, University of Massachusetts School of Medicine

SCOTT EPSTEIN, MD, FCCP

Vice-Chairman for Educational Affairs, Department of Medicine
Director of Medical Education
Caritas St. Elizabeth's Medical Center
Professor of Medicine, Tufts University School of Medicine

PROGRAM DIRECTORS

JEFFREY MENDEL, MD

Chair, Department of Radiology, Caritas St. Elizabeth's Medical Center
Assistant Professor, Tufts University School of Medicine

NICOLAOS MADIAS, MD

Maurice S. Segal, MD Chairman, Department of Medicine, Caritas St. Elizabeth's Medical Center
Chief Academic Officer, Caritas Christi Health Care
Professor of Medicine, Tufts University School of Medicine

ADMINISTRATIVE DIRECTOR

CHARLES ROLLINGER, MD

Medical Director, US Family Health Plan

WHO SHOULD ATTEND?

Physicians, medical residents, physician assistants and nurse practitioners in adult primary care, obstetrics and gynecology, emergency medicine, preventive medicine and radiology.

PROGRAM AGENDA

MORNING SESSION

- 7:30 a.m. Registration and Continental Breakfast
- 8:00 a.m. Welcome and Introductions
Ashley Davidoff, MD
Director, Radiological Education, Co-director, Abdominal Imaging,
Department of Radiology, Caritas St. Elizabeth's Medical Center
Professor of Clinical Radiology, University of Massachusetts School of Medicine
- Scott K. Epstein, MD, FCCP
Vice-Chairman for Educational Affairs, Department of Medicine
Director of Medical Education, Caritas St. Elizabeth's Medical Center
Professor of Medicine, Tufts University School of Medicine
- 8:10 a.m. Pulmonary Updates for the Primary Care Physician
COPD: Strategies for Successful Treatment
Bartolome Celli, MD
Chief, Division of Pulmonary Medicine, Caritas St. Elizabeth's Medical Center
Professor of Medicine, Tufts University School of Medicine
- 8:30 a.m. Update in Lung Imaging
Jeffrey Mendel, MD
Chair, Department of Radiology, Caritas St. Elizabeth's Medical Center
Assistant Professor of Radiology, Tufts University School of Medicine
- 8:50 a.m. Strategies in Chronic Cough: Hacking Your Way to Diagnosis and Treatment
Scott K. Epstein, MD, FCCP
Vice-Chairman for Educational Affairs, Department of Medicine
Director of Medical Education, Caritas St. Elizabeth's Medical Center
Professor of Medicine, Tufts University School of Medicine
- 9:10 a.m. Lung Nodules - New Approaches
David Lee, MD
Director of Clerkship and Section Head Chest Imaging
Caritas St. Elizabeth's Medical Center
Assistant Professor of Medicine, Tufts University School of Medicine
- 9:30 a.m. Risk Management Q &A
Bartolome Celli, MD
Jeffrey Mendel, MD
Scott Epstein, MD
David Lee, MD
- 9:45 a.m. Break
- 10:00 a.m. Treatment Strategies in Advanced Heart Failure: Drugs, Devices or Both?
Lana Tsao, MD
Director, Advanced Heart Failure Service, Caritas Cardiovascular Center
- 10:20 a.m. Cardiac CT: Where are we heading? Best Use Strategies.
Jeffrey Mendel, MD
Chair, Department of Radiology, Caritas St. Elizabeth's Medical Center
Assistant Professor of Radiology, Tufts University School of Medicine
- 10:40 a.m. Cardiac CTA – A Health Plan Perspective
Peter D. Goldbach, MD
Medical Director, Blue Cross Blue Shield of Massachusetts

- 11:00 a.m. The Aorta - Imaging Strategies
Ashley Davidoff, MD
Director, Radiological Education, Co-director, Abdominal Imaging,
Department of Radiology, Caritas St. Elizabeth's Medical Center
Professor of Clinical Radiology, University of Massachusetts School of Medicine
- 11:20 a.m. Aortic Aneurysms: Strategies for Screening & Management
George Tolis, MD, Chief of Cardiothoracic Surgery
Caritas St. Elizabeth's Medical Center
- 11:40 a.m. Chest Pain in the Office: Strategies - When to Stress, What Test to Use
John Pastore, MD
Division Cardiovascular Medicine, Caritas St. Elizabeth's Medical Center
Associate Professor of Medicine, Tufts University School of Medicine
- 12:00 noon Risk Management Q &A
Lana Tsao, MD
Jeffrey Mendel, MD
Ashley Davidoff, MD
George Tolis, MD
John Pastore, MD
- 12:15 p.m. Recess for Lunch
- 12:20 p.m. Lunchtime Presentation
Advances in Computerized Physician Order Entry with Decision Support
Richard Parker, MD
Medical Director, Beth Israel Deaconess Physician Organization
- Ahmed Ghouri, MD
Chief Executive Officer and Founder, SafeMed

AFTERNOON SESSION

TRACK ONE: ONCOLOGY - NEPHROLOGY

- 1:15 p.m. Difficult to Treat Hypertension: Diagnostic and Treatment Strategies
James Strom, MD
Chief, Division of Nephrology, Department of Medicine
Caritas St. Elizabeth's Medical Center
Professor of Medicine, Tufts University School of Medicine
- 1:35 p.m. Strategies for Managing Hyponatremia
Nicolaos Madias, MD
Maurice S. Segal, MD Chairman, Department of Medicine,
Caritas St. Elizabeth's Medical Center
Chief Academic Officer, Caritas Christi Health Care
Professor of Medicine, Tufts University School of Medicine
- 1:55 p.m. Nephrolithiasis: Diagnostic and Treatment Strategies
Bertrand Jaber, MD
Vice Chairman, Clinical Affairs, Department of Medicine
Caritas St. Elizabeth's Medical Center
Associate Professor of Medicine, Tufts University School of Medicine

- 2:15 p.m. Renal Imaging - Strategies for the Evaluation of Nephrolithiasis, Hematuria, and Renal Masses
Rebecca Schwartz, MD
Attending Radiologist, Caritas St. Elizabeth's Medical Center
- 2:35 p.m. Strategies for Cost Effective Screening for Cancer
Rekha Parameswaran, MD
Director of the Apheresis Service
Associate Program Director
Division of Hematology/Oncology
Caritas St. Elizabeth's Medical Center
- 3:00 p.m. Radiofrequency Ablation - Strategies and Prudent Use
Brian Lucey, MD
Chief, Radiology Service, Boston VA Healthcare System
Assistant Professor Radiology, Boston University School of Medicine
- 3:15 p.m. Risk Management Q &A
James Strom, MD
Nicolaos Madias, MD
Bertrand Jaber, MD
Rebecca Schwartz, MD
Rekha Parameswaran, MD
Brian Lucey, MD
- 3:30 p.m. Break
- 3:45 p.m. Screening for Colon Cancer - When to do Virtual Colonography
Scott Tsai, MD
Director of Pelvic Imaging, Attending Radiologist, Caritas St. Elizabeth's Medical Center
- 4:05 p.m. Strategies in Hematology: Thrombocytopenia, Anemia, Leukopenia: What Do I Do Next?
Thein Oo, MD
Division of Hematology/Oncology, Caritas St. Elizabeth's Medical Center
Assistant Professor of Medicine, Tufts University School of Medicine
- 4:25 p.m. Risk Management Questions and Final Discussion
Scott Tsai, MD
Thein Oo, MD
- 5:00 p.m. Meeting Adjourns

TRACK TWO: COMMONS ISSUES IN PRIMARY CARE

- 1:15 p.m. Strategies for Insulin Use in Type 2 Diabetes
Ann Sweeney, MD
Director of Bone Densitometry, Director of Diabetes Center,
Endocrinology Division, Department of Medicine, Caritas St. Elizabeth's Medical Center
Assistant Professor of Medicine, Tufts University School of Medicine
- 1:35 p.m. GERD: How to Treat, When to Scope
Roger Mitty, MD
Chief, Gastroenterology Division, Department of Medicine
Caritas St. Elizabeth's Medical Center
Assistant Professor of Medicine, Tufts University School of Medicine

- 1:55 p.m. Incidental Findings in Radiology - Clinical and Imaging Strategies
Peter Gordon, MD
Chairman, Radiology Department, Caritas Good Samaritan Medical Center
Assistant Professor of Radiology, Tufts University School of Medicine
- 2:15 p.m. Preventive Medicine: Effective Strategies in Adult Vaccination
Michael Worthington, MD
Chief, Division of Infectious Diseases, Caritas St. Elizabeth's Medical Center
Associate Professor of Medicine, Tufts University School of Medicine
- 2:35 p.m. Strategies for Evaluation of the Patient with Abnormal Liver Function Tests
Anisha Varma-Wilson, MD
Division of Gastroenterology, Caritas St. Elizabeth's Medical Center
Assistant Professor of Medicine, Tufts University School of Medicine
- 2:55 p.m. Back Pain - Imaging Strategies
Pierre d'Hemecourt, MD
Sports Medicine, Children's Hospital Boston
Lecturer on Orthopedic Surgery, Harvard Medical School
- 3:15 p.m. Risk Management Q &A
Ann Sweeney, MD
Roger Mitty, MD
Peter Gordon, MD
Michael Worthington, MD
Anisha Varma-Wilson, MD
Pierre d'Hemecourt, MD
- 3:30 p.m. Break
- 3:45 p.m. The Strengths and Weaknesses of MRI – Strategies in Use
Jeffrey Mendel, MD
Chair, Department of Radiology, Caritas St. Elizabeth's Medical Center
Assistant Professor of Radiology, Tufts University School of Medicine
- 4:05 p.m. Headache: Strategies for Cost Effective Diagnosis and Treatment
Shreyas Patel, MD
Department of Neurology, Caritas St. Elizabeth's Medical Center
Assistant Professor of Neurology, Tufts University School of Medicine
- 4:25 p.m. Risk Management Q & A and Final Discussion
Shreyas Patel, MD
- 5:00 p.m. Meeting Adjourns

REGISTRATION FORM

(Please tear off and fax or mail in)

Conference Fee: \$160

Caritas and TUSM affiliated providers pay only \$99

Register by Friday, March 16, and pay only \$125

Late Registration (after Friday, March 16) is \$160

Conference registration and payment must be made through Tufts Health Care Institute. You may register by mail, phone, fax, or at THCI's website at www.thci.org.

Tufts Health Care Institute
136 Harrison Avenue, Boston, MA 02111
tel: 617-636-1000 fax: 617-636-0429
web: www.thci.org

Please select which afternoon track you will be attending

Oncology-Nephrology Common Issues in Primary Care

Name: _____

Title: _____

Dept. or Program: _____

Organization: _____

Address: _____

City: _____

State: _____ Zip: _____

Email: _____

Phone: _____

Fax: _____

Total Payment: _____

Payment Methods Check: Payable to Tufts Health Care Institute

Credit Card: (Please check one)

Visa Mastercard AMEX Discover

Credit Card #: _____

Exp. Date: _____

Cardholder Signature: _____

THCI will confirm your registration upon receipt of payment.